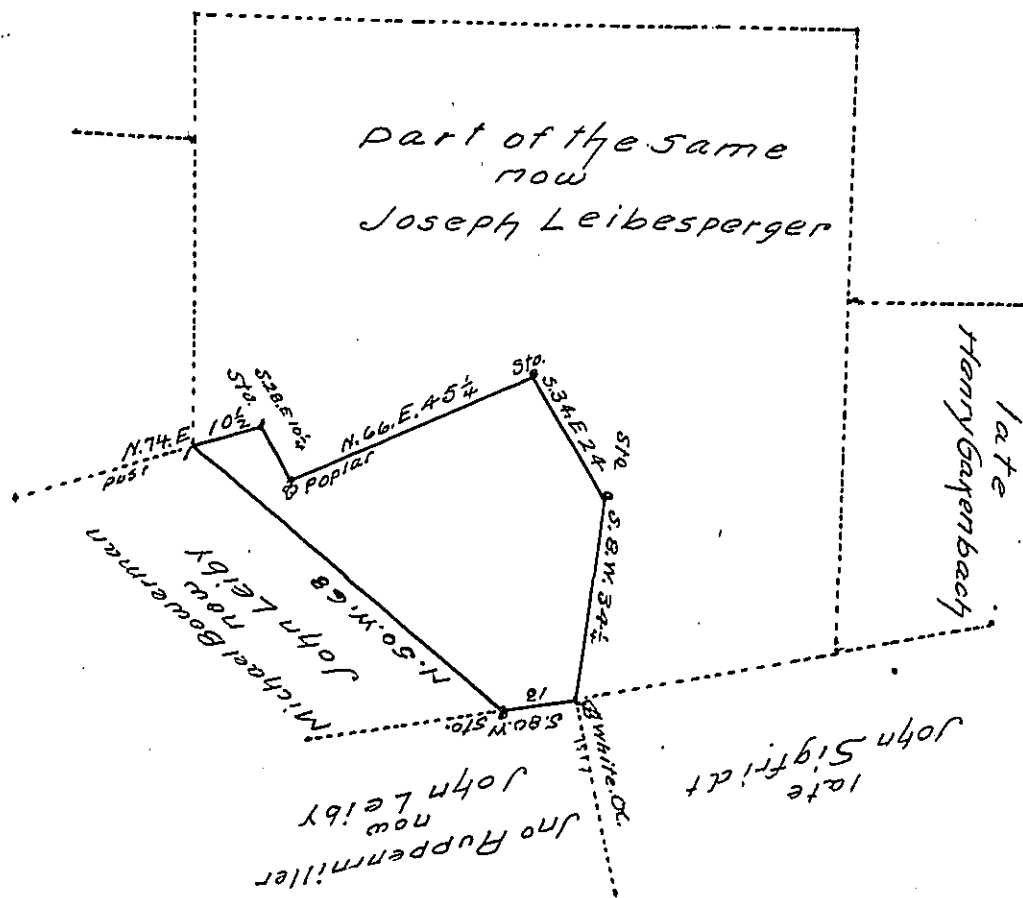


late  
Michael Bowerman



A Draught of a tract of Land situate in Weisenberg township  
in the County of (Bucks now) Lehigh. Containing Eleven acres  
ninety four perches & allowance of 6 p Gent &c.

Being part of Sixty eight acres & a half. Originally sur-  
veyed by Warrant dated 22<sup>th</sup> Nov<sup>r</sup> 1745 to Henry Sunday,  
the above made out for John Leiby Jan<sup>y</sup>. 27. 1832

Geo. S Eisenhart D.S.

Jacob Spangler Esq. S.G

IN TESTIMONY that the above is a copy of the original remaining on file in  
the Department of Internal Affairs of Pennsylvania, made  
conformably to an Act of Assembly approved the 16th day of  
February, 1833, I have hereunto set my Hand and caused  
the Seal of said Department to be affixed at Harrisburg,  
this twenty ninth day of March 1905

*Geo. S. Eisenhart*  
Secretary of Internal Affairs.